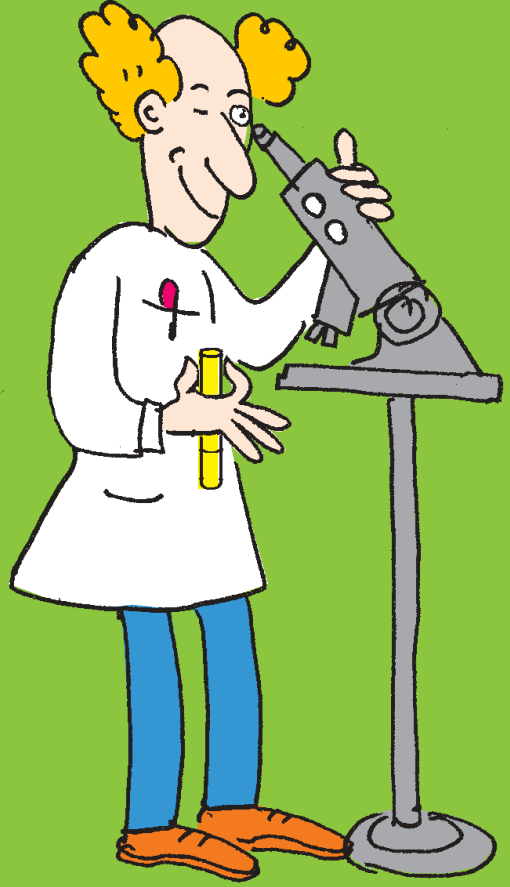




ENGLISH

מדענים



# Scientists and Researchers

עיצוב: סודיו הראל

מדענים  
אנגלית



הופק על ידי  
אגף מידע ופרסום  
המשרד לקליטת העלייה  
רח' הלל 15, ירושלים 94581  
כל הזכויות שמורות ©  
ירושלים

Publications Department  
Ministry of Immigrant Absorption  
15 Rehov Hillel, Jerusalem 94581  
All Rights Reserved ©

[www.moia.gov.il](http://www.moia.gov.il)  
e-mail: [info@moia.gov.il](mailto:info@moia.gov.il)

Scientists and  
Researchers |  
4<sup>th</sup> Edition

Special thanks to **Omri Ingber** of the Center for Absorption in Science for his assistance in preparing this booklet.

**Produced by the Publications Department  
Ministry of Immigrant Absorption**

**Ida Ben Shetreet** – Director, Publications Department

**Laura L. Woolf** – Director, English Language Publications

Jerusalem 2008

Catalogue Number: 010708030



## Table of Contents

Introduction	5	מבוא
The Center for Absorption in Science	6	המרכז לקליטה במדע
Scientific Research in Israel	7	מחקר מדעי בישראל
Receiving Assistance From the Center for Absorption in Science	10	תהליך הסיוע מהמרכז לקליטה במדע
Finding Work	20	חיפוש עבודה
Programs for the Encouragement of Applied Research and Development	31	תכניות לעידוד מחקר ופיתוח
Higher Education Studies	34	לימודי השכלה גבוהה
Useful Addresses	35	כתובות וטלפונים





## Introduction

---



The State of Israel recognizes the importance of the contributions of immigrant scientists to the country. For this reason, the Government established the Center for Absorption in Science in 1973.

The task of the Center for Absorption in Science is to assist new immigrant scientists and returning residents in finding employment, which in turn stimulates economic growth and societal development, and positively influences future aliyah.

Assistance has the dual goals of integrating scientists into existing R&D frameworks, and supporting the growth of new R&D enterprises.



## The Center for Absorption in Science

The Center for Absorption in Science assists new immigrant scientists and returning residents who have Master's degrees or PhDs, and who have proven research or development experience prior to aliyah or return to Israel. The Center can help you find employment in a scientific capacity according to your knowledge and background.

During the past decade, over 14,000 new immigrant and returning resident scientists have registered with the Center and received assistance. Some 75% found employment in research and development (the majority through the assistance of the Center, and others through projects sponsored by the Chief Scientists of various government ministries, for example, technological incubators operated by the Ministry of Industry, Trade, and Labor.)

Today the Center has an advanced computerized system that centralizes data on immigrant and returning resident scientists' skills in all areas of science, research, and development.



**Note:** the information in this booklet is based on data provided by various official sources. Details are subject to change. In case of any discrepancy, the regulations of the Ministry of Immigrant Absorption and other official bodies will prevail.

This is the fourth edition of this booklet and hereby nullifies all previous editions.



## Scientific Research in Israel



The State of Israel places great emphasis on R&D, in light of its contributions to economic growth, its influence on industry, and its contribution to Israel's ability to compete in international markets.

The percentage of national expenditure on R&D is higher than that of most other industrialized countries (some 2.3% of the GNP).

As in other countries, research in Israel includes basic research, industrial research, and applied research (development).

### Basic Research

Basic research, motivated by scientific curiosity, works for the attainment of new knowledge. Academic institutions conduct approximately 94% of all civilian basic research in Israel.

Israeli universities enjoy complete academic freedom, and as a result, basic research is the fruit of academic initiative and excellence. Universities receive some 37.5% of Government R&D investment.

Research is funded primarily through grants, which are awarded on a competitive basis. The Israel Science Foundation is the main coordinating body for funding scientific research. With a budget of roughly 60 million dollars per year, the Foundation funds some 1,300 grants annually.

### Strategic Research

Strategic research develops scientific ideas that have the potential to become new technologies, or



improves existing technologies with a clear economic aspect. Strategic research is the intermediary between basic and applied research. The Government directs some 8% of investment in R&D towards strategic research, through the Ministry of Science, which is responsible for advancing strategic research in Israel. The Ministry also funds research grants, operates R&D Centers throughout the country, and administers a variety of research and technology programs including the Israel Space Agency. For more information, see the Ministry Website: [www.most.gov.il](http://www.most.gov.il).

## Applied Research (Development)



Applied research is the implementation of scientific knowledge. It is conducted at government, regional, and academic applied-research institutes, in hospitals, and primarily in industry, where it is more commonly known as development.

The Government directs some 54.4% of its R&D investment budget towards applied research. Investments are channeled through the Chief Scientists' bureaus of various government ministries (the Ministry of Industry, Trade, and Labor, The Ministry of Agriculture, the Ministry of Health, the Ministry of the Environment, the Ministry of National Infrastructures, and others).

The Israeli Government links sustained economic development with the growth of the industrial sector, and for this reason directs the bulk its budget into industrial development. Some 43% of Government R&D investment is channeled into the industrial sector, through the Chief Scientist of the Ministry of Industry, Trade, and Labor.



The law establishes the main function of the Chief Scientist of the Ministry of Industry, Trade and Labor to encourage investment in industrial R&D.

The Chief Scientist's Bureau supports R&D through a number of channels for research grants, supplemented by private investors.

One such project is the technological incubators; a project established with the goal of enabling start-up efforts and scientists with innovative ideas to develop their ideas into viable commercial enterprises.



## Receiving Assistance from the Center for Absorption in Science

As explained above, the Center for Absorption in Science assists immigrant scientists in finding work in a scientific field. Those who meet the criteria listed below can be eligible for assistance.

### Definition of a Scientist

New immigrants and returning residents in one of the following categories are recognized as a scientist:

1. An individual holding a Ph.D. or equivalent degree, who was engaged in research and development during at least three of the five years preceding arrival in Israel, and who has published at least three scientific works or registered three patents.
2. An individual holding an M.Sc., MD, MA, or any post-graduate degree, who was engaged in scientific work or research after receipt of the degree, for at least four of the six years preceding arrival in Israel, and who has at least three scientific publications or patents to their credit.
3. An individual holding an M.Sc., MA, or any post-graduate degree, who, following graduation, was engaged in applied research and development during at least four of the six years preceding arrival in Israel. Scientists who do not have any publications or patents registered in their name will be eligible only as candidates for assistance in industrial R&D.
4. An individual holding an M.Sc. or equivalent degree and who is up to the age of 32, and has no experience in research and/or development. Such an individual is classified as a "young scientist" and is eligible for



absorption into an R&D position in the business sector and can receive assistance for one year.

5. An individual with an M.Sc. or equivalent degree up to the age of 37 can be accepted as a research student in one of the universities.



---

**Note:** individuals with Master's degrees in social sciences and humanities are not automatically recognized as scientists.

---

The Bureau for Evaluation of Foreign Academic Degrees and Diplomas (*HaLishka LeHa'arachat Toarim Academim VeDiplomat MiChul*) of the Ministry of Education determines the validity of degrees awarded by institutions of higher education abroad (See Useful Addresses).

### **Eligibility for Assistance**

The Center regards scientists who fit one of the following two categories as eligible for assistance:

1. A new immigrant who was approved by the Center for Absorption in Science as meeting the definition of a scientist, and who is below the age of 70.
2. A returning resident who has passed both stages of eligibility for assistance as a scientist:
  - The Returning Residents Division has certified overseas residence for more than 3 years prior to return to Israel;



- The Center for Absorption has approved the scientist's eligibility in accordance with its requirements as indicated above.

## **Period of Eligibility**

### **New Immigrant**

#### **Employment in the Public Sector**

- An immigrant scientist who is absorbed in the public sector must begin working with the Center's assistance within 3 years from the date of aliyah (physicians within 5 years).
- Duration of assistance – up to 3 years.
- Duration of eligibility – up to 6 years from the date of aliyah for a scientist and 8 years for physicians.

#### **Employment in the Commercial Sector**

- An immigrant scientist who is absorbed in the commercial sector must begin working with the Center's assistance within 4 years from the date of aliyah.
- Duration of assistance – up to 3 years.
- Duration of eligibility – up to 7 years from the date of aliyah.

### **Returning Resident**

#### **Employment in the Public Sector**

- A returning resident scientist who receives assistance from the Center must be employed within one year of returning to Israel.
- Duration of assistance – up to one year.
- Duration of eligibility – up to 3 years from the date of scientist's return to the country.



## **Employment in the Commercial Sector**

- A returning resident scientist who receives assistance from the Center must be employed within two years of returning to Israel.
- Duration of assistance – up to one year.
- Duration of eligibility – up to 4 years from the date of scientist's return to the country.

## **Extension of the Eligibility Period**

The Director of the Center for Absorption in Science is authorized to extend the eligibility of a scientist for up to six months. Extensions are granted on a case-to-case basis. An extension is more likely to be granted if the employer is committed to employing the scientist on a long-term basis.

Appeals of the Director's decisions, as well as requests for extension of the period of eligibility, can be submitted to the National Appeals Committee of the Ministry of Immigrant Absorption.

## **Employment in Science**

The Center for Absorption in Science assists in employment defined as scientific in nature. Included in this definition is scientific research, development work, or instruction at an institution of higher education or accredited post-secondary educational institution, including colleges that award engineering certificates recognized by the Ministry of Trade, Industry and Labor.



## Applying For Assistance



To apply for assistance, contact the national office of Center directly. If you are still overseas you may apply by post or e-mail (see Useful Addresses). Returning residents overseas can also apply via Israeli consulates.

The Center will evaluate your application and inform you whether you meet the criteria for recognition as a scientist. If so, you will be added to the Center's computerized database. Your request will be processed according to your field of academic certification. You may present the Center's authorization of eligibility when approaching potential employers.

The following documents are required for registration:

- Curriculum Vitae (resume) in Hebrew or English.
- List of scientific publications and registered patents.
- Photocopies of degree certificates (i.e. M.Sc., Ph.D.) and all documents detailing work experience and education.
- Photocopy of pages 2 and 3 of the *te'udat oleh*.
- Returning residents abroad must submit a questionnaire available at Israeli embassies overseas. Those already in Israel should consult with a local branch office of the Ministry of Immigrant Absorption.

**Note: Documents in languages other than Hebrew or English must have a notarized translation.**



Scientists who are considering aliyah may send their CVs and lists of publications to the Center via e-mail or regular mail.

### **Assistance from the Center for Absorption in Science**

Assistance from the Center is given directly to the employer and is designed to cover part of the immigrant scientist's salary. The employer must contribute the remainder of the salary. The assistance is given only after the scientist has arrived in Israel, has received a *te'udat oleh*, and the terms of employment have been reviewed and approved. It is necessary that the employer demonstrate a commitment to continue to employ the scientist following the conclusion of the period of assistance.

For more information, contact the Center. Details are also available on the Ministry Website:  
[www.moia.gov.il/Moia\\_en/Scientists/FinancialHelp.htm](http://www.moia.gov.il/Moia_en/Scientists/FinancialHelp.htm).

### **Program for Encouraging Research and Development Personnel to Return to Israel**

As part of the Ministry's policy of encouraging returning Ph.D research students, a new scholarship program has been instituted.

Assistance includes counseling, guidance, and financial aid that is channeled to employers in order to partially finance researchers' salaries in the commercial, public, and academic sectors. For more information, contact the Center. Details are also available on the Ministry Website:  
[www.moia.gov.il/Moia\\_en/Scientists/IdudProgram.htm](http://www.moia.gov.il/Moia_en/Scientists/IdudProgram.htm).



## Your Curriculum Vitae (Resume)



You will need to present a curriculum vitae (CV), or resume, any time you arrive for a job interview. A CV should include the following components:

1. Personal Information: Include your name, date of birth, date of aliyah, address, and e-mail address, and telephone numbers.
2. Profession: You may indicate more than one field of professional expertise.
3. Education: Provide the following details: degree; name of the higher education institution from which you received the degree; location of the institution; date the degree was received; and the discipline studied.
4. Courses and Advanced Training: List only what will interest the employer, including professional training or retraining you have undergone since arriving in Israel.
5. Professional Experience: Beginning with your most recent job, details of on-the-job experience, and areas of specialization. Emphasize research and development subjects you have dealt with.
6. Languages: Indicate written and verbal skill levels alongside each language you know, including any computer languages.
7. Publications: Including patents registered in your name.

Provide a list of publications on a separate page.

If you are applying for more than one kind of job, prepare several versions of your CV that stress skills appropriate to each area.



Your CV should be no more than one page in length (not including the list of publications). Print your CV on clean, good-quality paper. When sending a CV by e-mail, be sure that any special fonts or graphics are compatible with any receiver's mail program.

Check for spelling errors. If you are preparing a CV in Hebrew, have an acquaintance look it over for you before submitting it.

### **Accreditation of Degrees and Diplomas**

The Bureau for Evaluation of Foreign Academic Degrees and Diplomas (*HaLishka LeHa'arachat Toarim Academi'im VeDiplomat MiChul*) of the Ministry of Education is the accrediting body in Israel for all foreign degrees (see Useful Addresses).

Getting your academic degrees and diplomas from foreign institutions accredited in Israel can take time. It is suggested that you begin tending to the matter, including the translation of certificates, immediately upon your arrival in the country, or even before. Doing so will help to ensure that when you begin job hunting, you will be armed with the documents you need, translated into Hebrew and certified by the Bureau for Evaluation of Foreign Academic Degrees and Diplomas.

In order to obtain accreditation from the Bureau for Evaluation of Foreign Academic Degrees and Diplomas, you must take the following steps:

- Complete an application form. Forms are available at the Bureau for Evaluation of Foreign Academic Degrees and Diplomas (see Useful Addresses). Fill out only "Part A" of the form and attach the following documents:
  - An authenticated copy of the original degree certificate (diploma).



- An authenticated copy of your university or college transcript from each institution where you have completed a degree. The transcript should include the following:
  - ★ Date of registration, date of commencement of studies, date of completion of studies.
  - ★ A list of all courses taken and credit points received.
  - ★ A summary of courses and prior studies that were recognized by the institution and earned credit points.
  - ★ Location of studies.
- Certificates that attest to prior study.
- Notarized Hebrew translations of the above documents, if the originals are in a language other than English.
- Engineers should include a copy of their registration in the "Register of Architects and Engineers" ("*Pinkas HaMehandesim VeHaAdrichalim*"). To register, contact the Unit for Licensing & Registration of Engineers and Architects, (*Rishui VeRishum HaMehandesim VeHaAdrichalim*). See Useful Addresses.
  - Bring your *te'udat zehut* with you.
  - If you have changed your name, you will be required to include a marriage certificate or a notarized declaration of name change.
  - Submit the application form and all the relevant documents listed above. You must submit all originals and photocopies. The Ministry will return originals to you.

Following the submission of your documents, there is no need to approach the Ministry of Education in person. Your accreditation will be sent by mail.



The Ministry of Education does not grant accreditation for studies that were not completed. Accreditation is granted for the purpose of salary grade only.



## Finding Work

---



### **Assistance from the Center for Absorption in Science**

As part of the assistance process, the Center for Absorption in Science arranges an interview with an expert advisor in Israeli R&D.

During the interview, the advisor will determine your professional skills in accordance with the demands of the Israeli R&D market.

During this interview, you will present your CV, and will receive advice on what areas to emphasize. You should then send an updated CV following the interview.

The advisor will direct you to existing bodies that engage in R&D, and are related to your areas of expertise. At the conclusion of the interview, the advisor will submit a report to the Center for Absorption in Science that includes a profile of your professional characteristics (a description of your professional skills). The profile is programmed into the Center's computerized network and distributed to suitable potential employers.

The Center for Absorption in Science participates in a joint project with the Industrialists' Association of Israel (*Hitachdut HaTa'asiyanim BeYisrael*). Under its auspices, the Industrialists' Association locates job openings in industrial enterprises on the behalf of immigrant R&D engineers registered with the Center. Following an initial selection process, qualified engineers are invited for interviews, and evaluated for their compatibility to a variety of projects affiliated



with the Association. There is a similar project with the Kibbutz Industry Association (*Igud HaTa'asiya HaKibbutzit*). For more information, contact the program coordinators directly. See Useful Addresses.



---

**Note:** during your first year following aliyah, following the conclusion of Absorption Basket payments, you can receive assured income payments from the Ministry during your job search. To be eligible, you must register with your personal absorption counselor, and report to the counselor according to your personal employment program, which can include access to the Ministry's employment database, referrals to courses, and other services. Consult with a personal absorption counselor at a branch office of the Ministry of Immigrant Absorption for details.

---

### **Looking For Employment on Your Own**

Beyond official sources of assistance, you are encouraged to look for work independently as well. There are a number of methods of going about a job search in Israel.

To start with, it is a rare company or institution in Israel that lacks a Website. Many of these sites post job openings, or can at least refer you to their personnel departments. Even if there are no openings listed, it may still be worthwhile to research the company and probe any niches you might fit. Be sure to do your on-line homework before a job interview as well.

There are a number of personnel companies and headhunting agencies throughout the country. You can find them on the Internet and listed in the *Dapei Zahav*



(Yellow Pages) telephone directory. Many agencies also advertise their services in the help-wanted sections of the papers. A number of scientific and R&D enterprises recruit suitable personnel through these companies.

The immigrant organizations (Association of Americans and Canadians in Israel [AACI], UJIA, and the South African Zionist Federation) can also help you to locate prospective employers (see Useful Addresses). You can check the AACI's on-line Jobnet site ([www.jobnet.co.il](http://www.jobnet.co.il)), which contains job listings for a variety of professions.

The press also advertises job openings. While the English-language newspapers carry some ads, the majority is in the Hebrew newspapers. Many ads appear at least partially in English. You can also consult magazines and trade journals. They are often found on-line, or can be purchased in bookstores.

There are several yearbooks published in English dealing with industry in Israel. You can find many of them, as well as other related periodicals and newspapers at the Library of the Ministry of Science (see Useful Addresses).

Those interested in teaching positions can apply directly to colleges and universities, which hire according to their own criteria. The growing number of technological colleges can offer employment opportunities for qualified instructors.

High-school teachers can apply directly to the schools. High schools may choose their own teachers, but the Ministry of Education must approve their choice. Teachers at the elementary school level should consult with the Unit for Immigrant Teachers of the Ministry of Education as outlined in the booklet entitled "Teachers"



available from the Publications Department (see the order form at the back of this booklet).

Finally, one of the more common ways to look for a job in Israel is by word of mouth. Let everyone you can know that you are looking for work, and follow up on any leads they may offer. Some positions are filled before they are ever advertised.

## The Job Interview



The job interview is the culmination of your job search. During the interview, you have a very short amount of time in which to impress your interviewer with your capabilities as an employee, an individual, and a colleague. Your interviewer must investigate whether your skills meet the requirements of the position.

Therefore, it is very important to make a good impression. You should arrive on time and be dressed appropriately. Project a professional image, even if the interviewer is wearing shorts and a t-shirt. Do not smoke or chew gum, and be sure to turn off your cellular phone.

During the interview, you will be asked a diverse range of questions. Listen attentively to the interviewer and make an effort to answer all of the questions. Be prepared to discuss your background and prior experience.

Some of the questions you might be asked are:

- 'Why are you interested in this job?'
- 'Why aren't you working now?' or 'Why do you want to change jobs?'
- 'What kind of contribution can you make here?'



Before you arrive for an interview, start answering questions like these in your head. Also, consider those things you would like to ask the employer. The types of questions you ask can often be as important as your replies to the interviewer's questions. Be sure to find out whatever you can about your prospective employer before the interview. One good way is to investigate the company's Website.

Finally, remember to bring the following with you to an interview:

- Curriculum Vitae (see section above "Preparing a Curriculum Vitae")
- List of publications and/or patents
- Copies of degrees and/or diplomas, translated and accredited, if necessary, by the Bureau for Evaluation of Foreign Academic Degrees and Diploma (see section above entitled "Accreditation of Degrees and Diplomas").
- Letters of recommendation and/or references' names, addresses, and telephone numbers.
- Authorization of membership in professional or trade organizations.
- Two passport photos.
- Copies of articles you have written (Be prepared to leave them).

Be sure to present all documents in a polished, organized fashion.

Remember, bring original documents for presentation only. Never leave originals with the employer!

Before agreeing to take a position, clarify the following:

- The level of the work conducted.
- Expectations of you as an employee.
- Salary.



- Work hours.
- Vacations.
- Opportunities for advancement.

At the conclusion of the interview, inquire as to when you can expect a decision, and in what manner (telephone call, letter, etc.) so that you can maintain contact.

Following a successful interview, many employers will require you to take various types of exams, such as psychometric tests, and undergo other screening procedures before being hired.

## Hebrew



Your ability to speak Hebrew can have a decisive impact on your job search. Hebrew proficiency is important when making contacts and during job interviews. Even if the work you end up doing is in your native language, you must still be able to communicate with your colleagues, prepare reports, and undertake other activities procedures that require Hebrew proficiency.

It is important to register at a Hebrew ulpan as soon as possible after obtaining new immigrant status in Israel. New immigrants are usually eligible to receive a subsidy of their ulpan study only within the initial 18 months following the date of aliyah.

In order to find out about ulpan options, consult your personal absorption counselor. Your counselor will confirm your eligibility for a subsidy of your ulpan study and refer you to non-residential, Ministry-approved ulpanim in your area.



In addition to regular ulpan *aleph*, a number of vocational ulpan options are available to professionals such as physicians and engineers. These ulpan programs emphasize professional Hebrew terminology. A number of them also assist students in writing a CV and preparing for job interviews. Consult with your personal absorption counselor at a branch office of the Ministry of Immigrant Absorption.

It is worth noting that in many public sector institutions, proof of completion of Hebrew ulpan can count towards six months of seniority (*vetek*) for the purposes of determining salary.



---

**Note:** for more information, consult the booklet entitled "A Guide to Ulpan Study," available from the Publications Department. See the order form at the back of this booklet.

---

## Considerations When Seeking Employment

As indicated above, universities conduct the majority of basic research in Israel. Generally speaking, however, the chances of securing permanent employment in the public sector, which includes the universities and research institutes, are extremely low. The relatively low level of government research funding received by universities limits their ability to hire immigrant scientists.

In contrast, the absorption potential of Israel's industrial sector is much greater, especially during periods of economic growth. The chances of finding permanent employment for immigrant scientists are usually higher



in industry, where most enterprises are independent of government assistance.

### **The Initial Absorption Period**

Bodies that employ immigrant scientists often invest great effort and resources to help them acquire the skills that enhance their ability to succeed (including Hebrew, computers, work procedures, etc.,) as well as accelerate their integration into Israeli society. By participating in employment costs, the Center for Absorption in Science provides an incentive to hire immigrant scientists, thus affording a transitional period following immigration. You are encouraged to use this period to sharpen your communicative and technical skills, and to become familiar with the scientific world in Israel. Be aware that cultural differences may exist between the Israeli workplace and what you were accustomed to before aliyah. The ability to be flexible and accept differences will contribute to your integration.

Building connections is another essential step in your career. The connections you make during the initial absorption period often determine where you end up down the road. Contacts are especially important if you are interested in working in a university setting.

In most instances, immigrant scientists are integrated into existing research projects headed by veteran Israeli scientists, who serve as advisors or tutors. Even in cases where groups of immigrant scientists conduct independent research, a tutor or coordinator affiliated with the institution will usually advise the group during the research process. It is recommended to take advantage of these veteran Israeli colleagues and seek their advice and assistance.



## Conditions of Employment

The Center for Absorption in Science assists in the absorption of scientists into the R&D system in Israel by participating in their salaries up to a certain specified amount.

Candidates for assistance must meet Center for Absorption in Science recognition criteria as an immigrant or returning resident scientist, and be eligible for assistance according to Ministry of Immigrant Absorption regulations. The employer must meet criteria defining scientific work.

Assistance rates are determined by your academic level (e.g. M.A., Ph.D, post-doctoral). The assistance covers part of the costs of your employment. Assistance is only granted for scientific work conducted in Israel.

Employment costs that are recognized by the Center for Absorption in Science include the gross salary of the scientist, plus costs obligatory by law, including employers' tax, worker's compensation fund, National Insurance, and social benefits such as travel costs and pension insurance.

An inter-ministerial committee is responsible for approving requests for assistance. Assistance is provided for up to one year at a time.

## Approval Process



The Center for Absorption in Science grants assistance to employers only upon the recommendation of an inter-ministerial committee. The committee convenes on a weekly basis, and may approve assistance for one



year only. Requests for extensions of assistance must be submitted for review each year.

Following the recommendation of the committee, the Center for Absorption in Science and the employer sign a contract.

One-time assistance may be approved for acquiring equipment or materials, or other expenses related to research conducted by an immigrant scientist. The level of one-time assistance varies between the industrial and the public sectors.

The financial assistance described above is indirect assistance, which is given to the employer, not the scientist. In accordance with this policy, no employer-employee relationship exists whatsoever between you and the Center. The Center does not determine salaries, but conditions its participation on employment costs and minimum required pay. Salary and other terms are determined solely between you and employer, in accordance with labor laws. The employer is responsible for all obligations defined by law, including minimum wage, reporting and paying taxes, social benefits, National Insurance, etc.

**Note:** for more details, see the booklet entitled "Employment," available from the Publications Department. See the order form at the back of this booklet.

In most cases, the salaries of scientists employed in public sector institutions are low. Employment costs for these institutions are determined in accordance with a minimum stated in the agreement between the Center for Absorption in Science and the institution. Employers in the business sector usually raise the salaries of scientists during the period of employment according to performance and level of responsibilities.



The contract between the Center and the employer is a standard one, and is valid only after both parties have signed it. The Center signs the contract upon receipt from you of a signed statement that you understand the contents of the contract (despite the fact that you are not a party to the contract).

The Center transfers its contribution to the employer based on the employer's signed expense report, including copies of your salary statements. A report that includes research expenses is unacceptable unless you sign it and verify that expenditures were for research conducted at the place of employment only.

**Note:** Never sign on a blank or inaccurate expense report. Doing so constitutes a violation of the law.

In accordance with the law, any product of your labor, including any development work or inventions produced during the period of employment, are the exclusive properties of your employer, unless indicated otherwise in the employer-employee contract.

If you change jobs during the approved period of assistance, the Center for Absorption in Science will not automatically transfer assistance to your employer. The original employer must agree to the transfer of assistance in order for the Center to do so.



## Programs for the Encouragement of Applied Research & Development



The Office of the Chief Scientist (*Misrad HaMadan HaRashi*) of the Ministry of Industry, Trade, and Labor sponsors several programs for the encouragement of industrial research and development. The following programs are only some of those in which the government participates in industrial R&D projects.

### **MATIMOP – Israeli Industry Center for Research and Development (*Mercaz Ta'asia Yisraelit LeMechkar U'Pituach*)**

MATIMOP is a public, non-profit organization, founded by the three major manufacturers' associations in Israel. MATIMOP focuses on promoting the development of advanced technologies in Israel, and on creating fruitful partnerships through industrial cooperation, joint ventures and contract R&D. The organization is active in the implementation of agreements for joint industrial R&D between the Israeli government and local and national authorities, as well as with multi-national organizations worldwide. MATIMOP is considered the main technology clearinghouse in Israel.

For more information on MATIMOP, See Useful Addresses.



## **BASHAN – Technological Applications**

BASHAN works to advance and apply ideas and proposals for technological projects developed by immigrant scientists and engineers.

BASHAN offers assistance in the following forms:

- Establishing new technological companies.
- Raising capital.
- Creating ties between industries, technological incubators, and other companies in Israel and abroad.
- Preparing market surveys and business programs.
- Preparing catalogues and advertising material for choice projects.

For more information regarding BASHAN, See Useful Addresses.

## **Tnufa**

Tnufa is a public body under the auspices of MATIMOP that helps individual inventors and entrepreneurs to develop ideas that have commercial potential in order to implement them in the industrial sector.

Tnufa's services include:

- Assistance with practical ideas that have been judged by a professional committee as capable of being patented in accordance with the "Patent Law, 1967."
- Financial assistance for constructing a prototype from the "Fund for Advancement of Pre-Industrial Research." Assistance is up to a set maximum.

## **Technological Incubators**

Technological incubators (*Chamamot LeYazamut Technogit*) are support frameworks that give



entrepreneurs (new immigrants and veteran Israelis) an opportunity to develop their innovative technological ideas, and establish businesses in order to bring them into commercial use. The incubator program is operated under the guidance and support of the Office of the Chief Scientist of the Ministry of Industry, Trade, and Labor.

The period of activity within the incubator helps to enhance the entrepreneur's prospects of raising financial investments, merging with a strategic partner, and growing from the incubator as an independent business.

Each incubator is an independent, non-profit corporation, and is capable of running 10-15 projects. Technological incubators are in operation throughout the country. There are approximately 200 projects currently being carried out within their auspices, half of them initiated by recent immigrants.

Through the technological incubators, the government provides entrepreneurs with the following services:

- Physical premises, including infrastructure
- Financial resources
- Tools
- Professional guidance
- Administrative assistance

The incubators offer assistance for a period of up to two years.

Criteria for acceptance to the incubator project include a plan for an R&D project based on an innovative technological idea, and which is geared towards developing a product with export potential.

For more information on technological incubators, see Useful Addresses.



## Higher Education Studies



You can study almost any scientific discipline in Israel, either in a university, or at one of the many regional colleges and technical colleges located throughout the country. Depending on the area and level of study, courses culminate in either an academic degree, or a technical degree or diploma. The period of study can range from one to several years.

If you are interested in pursuing studies in Israel, you should consult with the institution of your choice for more information. You should also contact the Student Authority (*Minhal HaStudentim*), which provides academic counseling and financial assistance to new immigrants who meet their eligibility requirements. See Useful Addresses.



## Useful Addresses and Telephone Numbers

Telephone numbers and some addresses change frequently in Israel. Consult the latest telephone directory or information operator if you do not reach a number listed here. When a telephone number has been changed, there may not be a recorded message noting the change. Thus, if the number continues to be unanswered, check whether it is still in use.



Address

Tel./Fax

### Ministry of Immigrant Absorption

Selected list

[www.moia.gov.il](http://www.moia.gov.il)

[info@moia.gov.il](mailto:info@moia.gov.il)

National Telephone Information Center (03) 9733333

#### Main Office

2 Rehov Kaplan  
Kiryat Ben Gurion  
POB 13061  
Jerusalem 91130

Public Inquiries (02) 6752765

Returning Residents Division (02) 6750365

2 Rehov Kaplan  
Jerusalem



Address	Telephone/Fax
---------	---------------

Entrepreneurs Division	(02) 6752625
------------------------	--------------

### **Jerusalem and Southern District Headquarters**

(Also the Student Authority)

15 Rehov Hillel	(02) 6214555
Jerusalem 94581	Fax: (02) 6222807

Publications Department	Tel/Fax: (02) 6241585
-------------------------	-----------------------

Student Authority	
Department of Academic Studies	(02) 6214601

English Desk	(02) 6214589
naomis@moia.gov.il	Fax: (02) 6242130

### **Haifa and Northern District Headquarters**

(Also the Student Authority)

15 Sderot HaPalyam	(04) 8631111
Haifa 33095	Fax: (04) 8631110

Student Authority	(04) 8631161
-------------------	--------------

### **Tel Aviv and Central District Headquarters**

(Also the Student Authority)

6 Rehov Esther HaMalka	(03) 5209111
Tel Aviv 64398	Fax: (03) 5209153

Student Authority	(03) 5209155
	Fax: (03) 5209178

### **Beer Sheva and Negev District Headquarters**

(Also the Student Authority)

Beit Oshira	(08) 6261231/228/230
31 Rehov Zalman Shazar	Fax: (08) 6261240
Beer Sheva 84105	



Address	Telephone/Fax
Student Authority	(08) 6261231 Fax: (08) 6261240

## Center for Absorption in Science

(HaMercaz LeKlita BeMada)

2 Rehov Kaplan  
POB 13061  
Jerusalem 91130  
Fax: (02) 6752664

Technology and Exact Sciences  
Division (02) 6752707/2603  
E-mail: nunub@moia.gov.il

Life and Medical Sciences Division (02) 6752767/8  
E-mail: yoelb@moia.gov.il

Social Sciences Division (02) 6752607/9  
E-mail: yannag@moia.gov.il

## Bureau for the Evaluation of Foreign Academic Degrees and Diplomas

The Ministry of Education  
www.education.gov.il  
diplome@education.gov.il

2 Rehov Devorah (02) 5602853  
Jerusalem

71 Rehov Jabotinsky (03) 6931856/7  
Ramat Gan 52544



Address

Telephone/Fax

### **Ministry of Industry, Trade and Labor**

[www.tamas.gov.il](http://www.tamas.gov.il)

30 Rehov Agron

(02) 6662000

POB 299

Jerusalem 91002

### **The Ministry of Science and Technology**

[www.most.gov.il](http://www.most.gov.il)

HaKiryia HaMizrachit Building 3

(02) 5411111

P.O.B. 49100

Jerusalem

### **MATIMOP – Israel Industry Center for R&D**

*(Mercaz Ta'asiya Yisraelit LeMechkar U'Pituach)*

[www.matimop.org.il](http://www.matimop.org.il)

[rdinfo@matimop.org.il](mailto:rdinfo@matimop.org.il)

29 Rehov HaMered

(03) 5118111

Tel Aviv 68125

### **Tnufa**

[www.invent.org.il](http://www.invent.org.il)

[mail@tnufa.org.il](mailto:mail@tnufa.org.il)

29 Rehov HaMered

(03) 5165044

Tel Aviv 61500

### **BASHAN**

29 Rehov HaMered

(03) 5165044

Tel Aviv 61500



Address

Telephone/Fax

### **Technological Incubators**

[www.incubators.org.il](http://www.incubators.org.il)

[incubators@actcom.co.il](mailto:incubators@actcom.co.il)

29 Rehov HaMered

(03) 5103941

Tel Aviv 61500

### **Industrialists Association of Israel**

*(Hitachdut HaTa'asiyanim BeYisrael)*

[www.industry.org.il](http://www.industry.org.il)

[amnon@industry.org.il](mailto:amnon@industry.org.il)

Beit Hata'asiya

(03) 5198745/818

29 Rehov HaMered

Tel Aviv 68125

### **Kibbutz Industry Association MANOF – Kibbutz Industrial Zone**

*(Igdud HaTta'asayah HaKibbutzit,*

*Azor HaTa'asiya HaKibbutzit)*

13 Rehov Leonardo DaVinci

(03) 6955413

POB 40012

Tel Aviv 61400

### **Unit for Registration of Engineers and Architects**

*(HaYechida LeRishum HaMehandesim*

*VeHaAdrichalim)*

[aeai@netvision.net.il](mailto:aeai@netvision.net.il)

86 Derech Petach Tikva

(03) 5634271/164

POB 36049

Fax: (03) 5612295

Tel Aviv 61360



Address

Telephone/Fax

## Small Business Development Centers

(*Mercazei Tipuach Yazamat, MATI*)

National Information Line

1-700-700-605

## English-Speaking Immigrant Organizations

Association of Americans and  
Canadians in Israel (AACI)

[www.aaci.org.il](http://www.aaci.org.il)

[info@aaci.org.il](mailto:info@aaci.org.il)

6 Rehov Mane  
[Jerusalem](#) 92227

(02) 5617151  
Fax: (02) 5661186

76 Rehov Ibn Gvirol  
POB 16266  
[Tel Aviv](#) 61162

(03) 6965244/65/6/7  
Fax: (03) 6967049

28 Rehov Shmuel HaNatziv  
[Netanya](#) 42281

(09) 8330950  
Fax: (09) 8629183

Matnas "Yud Aleph"  
Rehov Mordechai Namir  
[Beer Sheva](#) 84483

(08) 6433953  
(08) 6434461



Address	Telephone/Fax
<a href="#">UJIA Israel (Incorporating Olim from Britain, Australia and New Zealand)</a>	
76 Rehov Ibn Gvirol POB 16266 <a href="#">Tel Aviv</a> 61162 E-mail: <a href="mailto:Israel@UJIA.org.il">Israel@UJIA.org.il</a>	(03) 6965244/65/6/7 Fax: (03) 6967049
6 Rehov Mane <a href="#">Jerusalem</a> 92227 E-mail: <a href="mailto:jerusalem@ujia.org.il">jerusalem@ujia.org.il</a>	(02) 5617151 Fax: (02) 5661186
Mercaz Klita P.O.B. 348 <a href="#">Carmiel</a> E-mail: <a href="mailto:karmiel@ujia.org.il">karmiel@ujia.org.il</a>	(04) 9904232
<a href="#">South African Zionist Federation</a> <a href="http://www.telfed.org.il">www.telfed.org.il</a> <a href="mailto:telfed@inter.net.il">telfed@inter.net.il</a>	
Head Office 19/3 Rehov Schwartz First Floor <a href="#">Ra'ananna</a> 43212	(09) 7446110 Fax: (09) 7446112
13 Sderot Ben Maimon <a href="#">Jerusalem</a> 92223	(02) 5634822 Fax: (02) 5663193



Address

Telephone/Fax

ESRA – English Speaking

Residents Association

[www.esra.org.il](http://www.esra.org.il)

[esra@trendline.co.il](mailto:esra@trendline.co.il)

POB 3132

(09) 9580632

Herzlia 46104

Fax: (09) 9581583



## Other Available Publications

The following booklets are available from the Publications Department. To order, simply indicate the booklets you wish to receive and return the order form to the Publications Department, English Section, Ministry of Immigrant Absorption, 15 Rehov Hillel, POB 13061, Jerusalem 91130. The publications will be mailed to you free of charge.

- Guide for the New Immigrant
- The Absorption Basket
- Employment
- Employment Guidance Centers
- Education
- First Steps
- Guarding Your Health in Israel
- A Guide to Services for the Disabled
- A Guide to Transportation in Israel
- A Guide to Ulpan Study
- Health Services in Israel
- Housing
- The Life Cycle in Israel
- Military Service
- National Insurance Institute
- Retirees
- Accountants
- Artists, Writers, and Athletes
- Computer and Hi-Tech Professionals
- Engineers and Architects
- Lawyers
- Medical Professionals
- Nurses
- Psychologists
- Scientists and Researchers
- Social Workers
- Teachers
- Assistance to Victims of Enemy Actions
- Registering for a Health Fund
- Information for Olim Newspaper
- Shiluv Magazine

Name \_\_\_\_\_

Address \_\_\_\_\_

Postal Code \_\_\_\_\_

Date \_\_\_\_\_



## *A moment of your time!*

In order to improve the level and usefulness of the material presented in this booklet, we would appreciate it if you would answer the following questions:

1. Where did you get the brochure "Scientists and Researchers?"

- Airport  Ministry of Immigrant Absorption  
 Other (specify) \_\_\_\_\_

2. To what extent did this booklet provide you with the information that you needed? (1 is the lowest rating, 5 is the highest)

1 2 3 4 5 Comments \_\_\_\_\_

3. Please rate the following areas from 1 to 5  
(5 being the highest rating)

- |   |   |   |   |   |   |
|---|---|---|---|---|---|
| <input type="checkbox"/> Clarity of the Text        | 1 | 2 | 3 | 4 | 5 |
| <input type="checkbox"/> Sufficiency of Details     | 1 | 2 | 3 | 4 | 5 |
| <input type="checkbox"/> Usefulness of the Brochure | 1 | 2 | 3 | 4 | 5 |
| <input type="checkbox"/> Design of the Brochure     | 1 | 2 | 3 | 4 | 5 |

We would appreciate the following information for statistical purposes:

Profession \_\_\_\_\_ Gender  M  F Age \_\_\_\_\_

Country of Origin \_\_\_\_\_ Year of Aliyah \_\_\_\_\_

Place of Residence \_\_\_\_\_ Date \_\_\_\_\_

Please send the completed questionnaire to the Ministry of Immigrant Absorption, Publications Department, English Section, 15 Rehov Hillel, Jerusalem, 94581, or by fax to (02) 6241585. You can also place this questionnaire in the public suggestions box at an office of the Ministry of Immigrant Absorption nearest you.

Thank you for your cooperation. Best wishes for an easy and successful absorption!







